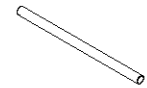
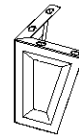
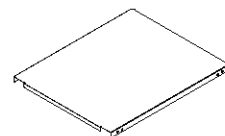


Self-tapping  
Screw(5x12):24 Pcs



Left Side Plate:1 Pc

Right Side Plate:1 Pc

Door Frame:1 Pc

Back Plate:1 Pc

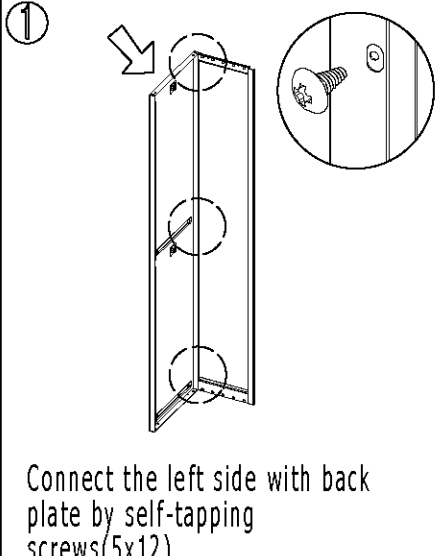
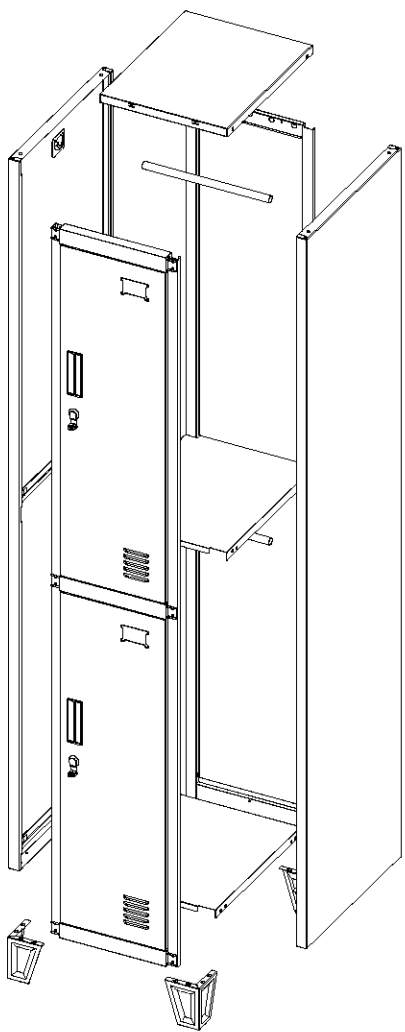
Top Plate:1 Pc

Middle plate:1 Pc

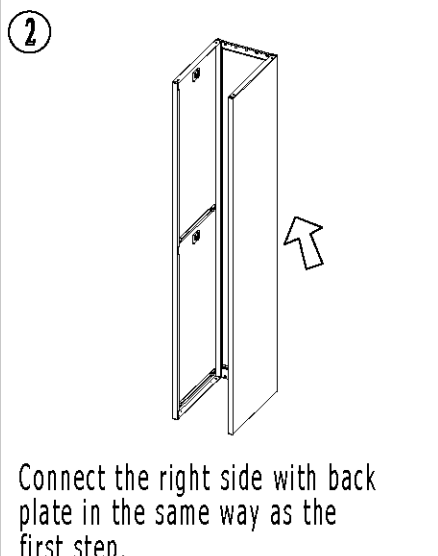
Standing  
Feet:4 Pcs

Hanging Rod  
2 Pcs

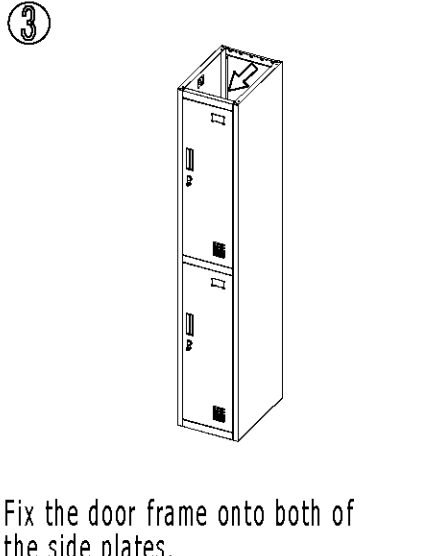
Key:2 Sets



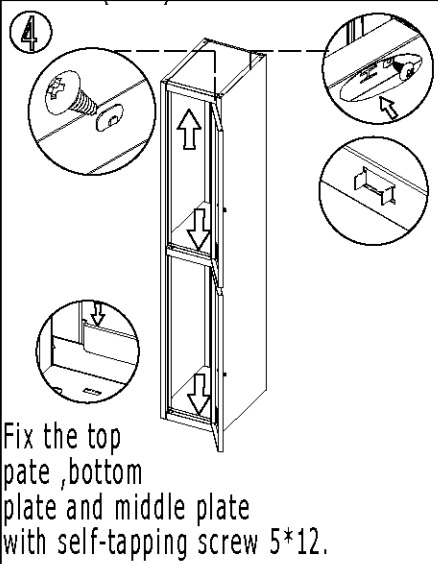
1  
Connect the left side with back  
plate by self-tapping  
screws(5x12).



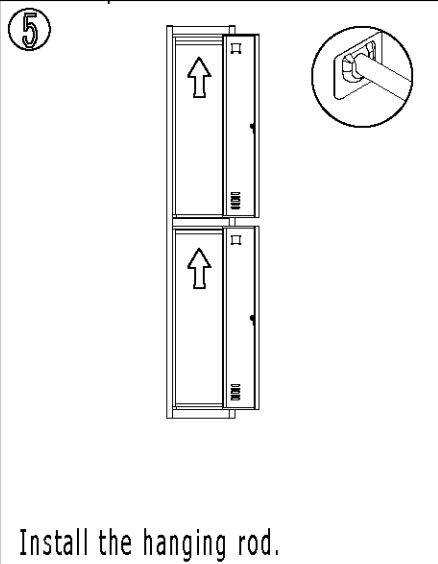
2  
Connect the right side with back  
plate in the same way as the  
first step.



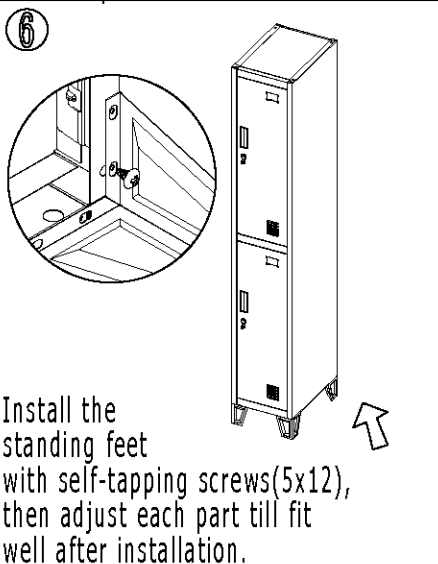
3  
Fix the door frame onto both of  
the side plates.



4  
Fix the top  
pate ,bottom  
plate and middle  
plate with self-tapping screw 5\*12.



5  
Install the hanging rod.



6  
Install the  
standing feet  
with self-tapping screws(5x12),  
then adjust each part till fit  
well after installation.