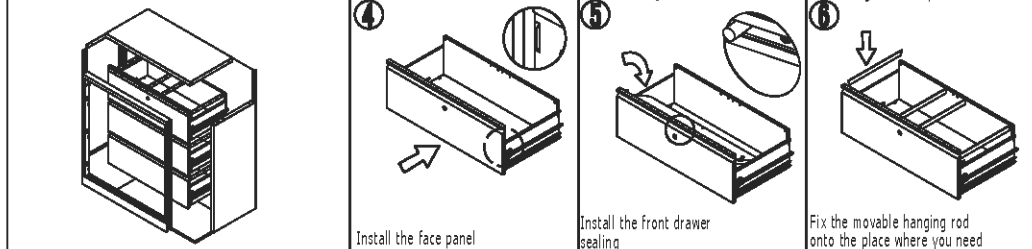


Bend the drawer box as the drawing

Install the back drawer sealing

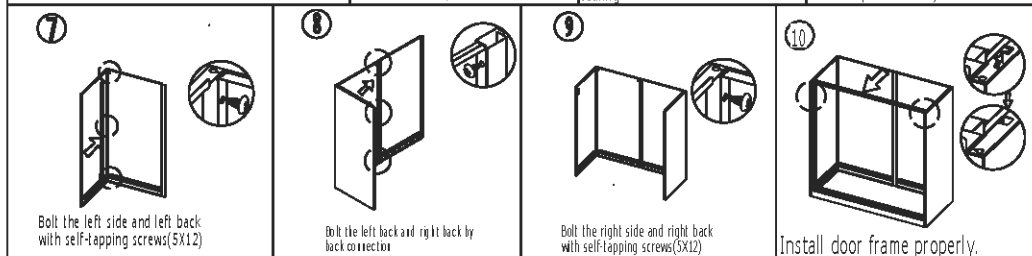
Fix the inner rail onto the left and right drawer panel



Install the face panel

Install the front drawer sealing

Fix the movable hanging rod onto the place where you need

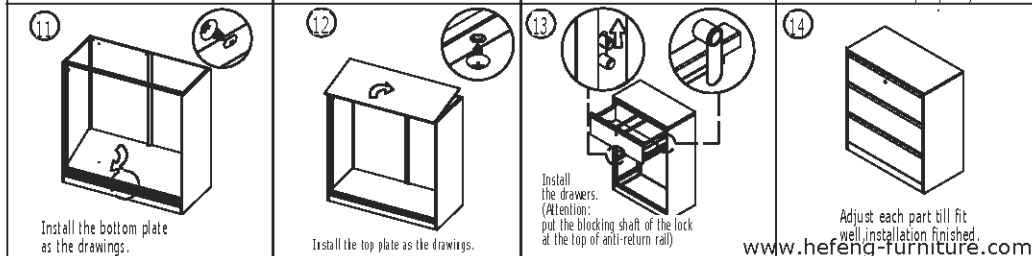


Bolt the left side and left back with self-tapping screws(5x12)

Bolt the left back and right back by lock connector

Bolt the right side and right back with self-tapping screws(5x12)

Install door frame properly.



Install the bottom plate as the drawings.

Install the top plate as the drawings.

Install the drawers. (Attention: put the blocking shaft of the lock at the top of anti-return rail)

Adjust each part till fit well, installation finished.