

SPECIFICATION DATA:



Item Name	: Steel Storage Cupboard
Model No.	: JF-C40
Product Size	: H2025 * W900 * D450mm
Packing Volume	: 0.1651CBM
Loading Qty	: 205 pcs/20GP, 498 pcs/40HQ
Material	: Heavy gauge cold-rolled steel plate
Thickness	: 0.5-1.0MM
Finish	: Durable electrostatic powder coating
Warranty	: 10 Years

Description

- Pre-treatment : Water wash, chemical wash, phosphating.
Colour : Classic grey, two-tone option, or other customized colour.
Fittings : One lockable box, chrome coat rod, keyed Camlock or Padlock latch.
Accessories : 2 keys, assembly screws.

Features

- Knock down and easy assembling construction.
- Different locks for option.
- Different colour for option.
- Different air ventilation for option.
- Master key available.
- Core removable lock available.

Details

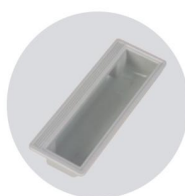
· Pad Lock



· Ventilation



· Plastic Handle



· Coat Rod



· Inside Box

